



A Guided Journey Through Rwanda
November 30 – December 11, 2020



Journey Overview



Day 1	Monday, November 30, 2020	Arrive in Kigali
Day 2	Tuesday, December 01, 2020	At Leisure in Kigali
Day 3	Wednesday, December 02, 2020	From Kigali to the Volcanoes National Park
Day 4	Thursday, December 03, 2020	Gorilla Trekking in the Volcanoes National Park
Day 5	Friday, December 04, 2020	Optional Second Gorilla Trek in the Volcanoes National Park
Day 6	Saturday, December 05, 2020	From Volcanoes National Park to Nyungwe Forest National Park
Day 7	Sunday, December 06, 2020	Chimpanzee Trekking in the Nyungwe Forest National Park
Day 8	Monday, December 07, 2020	Canopy Walk Experience in the Nyungwe Forest National Park
Day 09	Tuesday, December 08, 2020	Nyungwe Forest National Park to Akagera National Park
Day 10	Wednesday, December 09, 2020	On Safari in the Akagera National Park
Day 11	Thursday, December 10, 2020	On Safari in the Akagera National Park
Day 12	Friday, December 11, 2020	Depart Kigali back to USA

Day 1 - 3: November 30 – December 02, 2020

Kigali Serena Hotel, Kigali, Rwanda



Today we will arrive into Kigali (please note the cost of this international flight is not included in your program cost). Here we will be met by our local representatives and escorted to our hotel for the next two nights, the Kigali Serena Hotel. At the hotel we will undergo a Covid-19 test that will be sent away for processing. The test is completed within 24 hours and until our results have been announced we are restricted to our hotel rooms.

If we receive our test results back the following morning, we will then enjoy an afternoon tour of Kigali taking in all of the most important historical and cultural sites. Should our results only be delivered in the afternoon or early evening we will instead enjoy this tour the following morning before departing for Volcanoes National Park.

Meals Included: Breakfast

Day 3 - 6: December 02 – December 05, 2020

One&Only Gorilla's Nest, Volcanoes National Park, Rwanda



Leaving Kigali behind we will then enjoy a scenic 2.5-hour drive to our next destination, the Volcanoes National Park. Here we have 3 nights at the incredible One&Only Gorilla's Nest! On our arrival day we will simply rest up and relax into our tranquil surroundings as we prepare for our gorilla trek set for the following morning.

Early the next morning we will rise just as the sun is peeking over the horizon and make our way to the nearby ranger station. Here we will meet with any other travelers who are embarking on today's journey and with everyone assembled the local rangers will assign everyone into small groups of between 6 and 8. We will then set off into the jungle in search of these incredible creatures.

Along with a small team of porters who are on hand to assist with carrying any heavy items we may have (think photographic equipment) we will scramble along the dense jungle paths as we move deeper into the tropical jungle. After anywhere from 15 minutes to an hour and a half, depending on where the nearest troop is currently residing, we will reach our goal. Weighing up to 500 pounds these gentle giants may view us with a hint of curiosity but will for the most part simply ignore us as they go about their day. We will have around an hour to sit quietly and observe the troop as they interact with one another and the young play all around us.

Following this magical experience, we will then make our way back down the mountainside. Arriving back at the ranger station we will enjoy a short transfer back to your lodge where we then have the remainder of your day at leisure.

The following day is then at leisure. Anyone interested in doing a second gorilla trek today is welcome to (at additional cost), otherwise the lodge offers a number of fun and interesting other experiences that are included in your stay.

Meals Included: Full board (Including Local Beers, Wines, Spirits & Soft Drinks)

Day 6 - 9: December 05 – December 08, 2020

Nyungwe House, Nyungwe Forest National Park, Rwanda



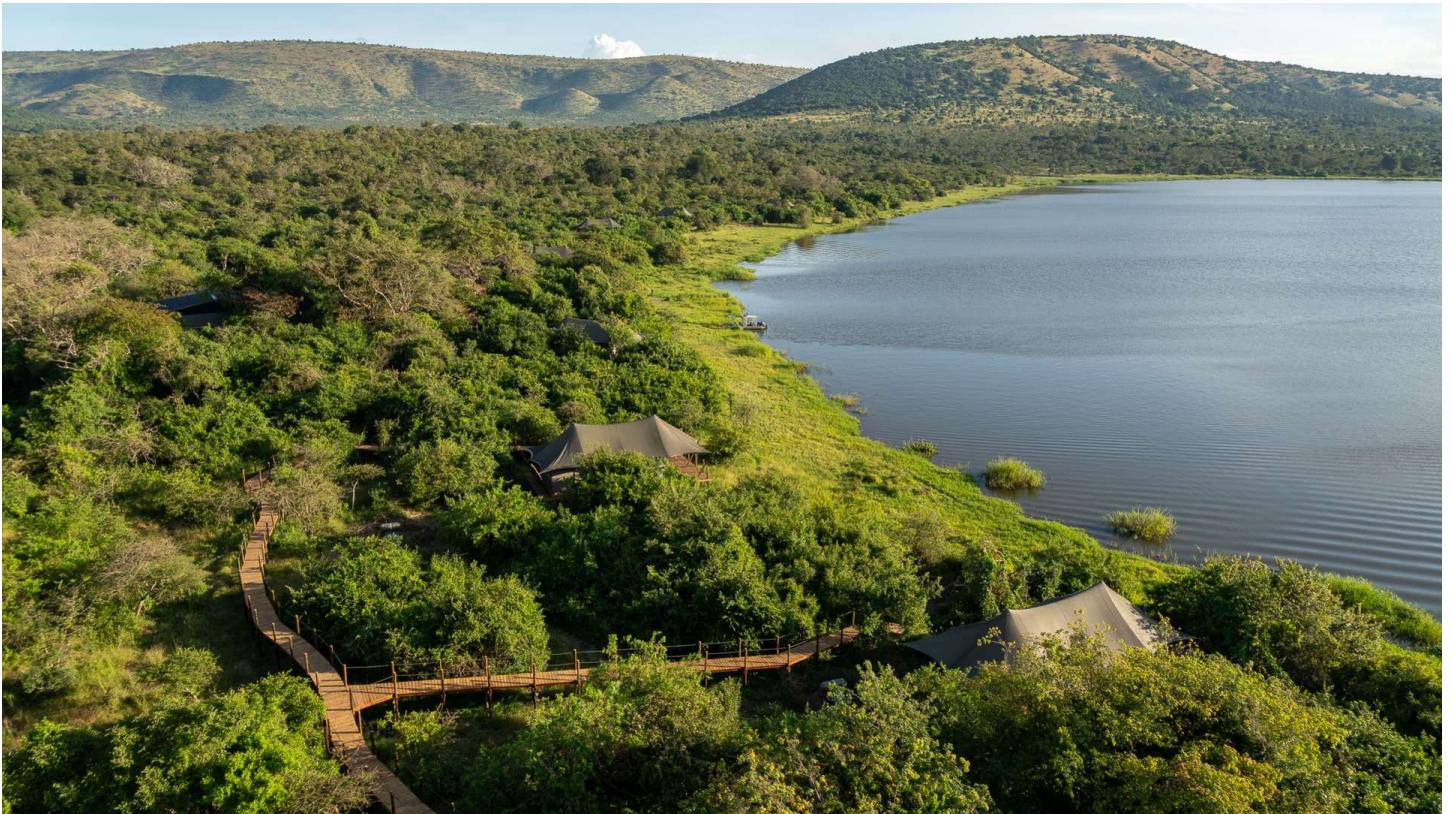
Today we will bid farewell to Volcanoes National Park and enjoy a beautiful drive that is going to take us West to the tea-plantations of Gisakura. Along the way we will stop at Cormoran Lodge on the edge of Lake Kivu. Here we will enjoy lunch and a chance to stretch our legs along the scenic Congo Nile trail. We will then continue towards the Burundi border where we will arrive at One&Only Nyungwe House.

Over the next three days we will experience one-of-a-kind encounters as we explore this incredible area. We will head out on foot to track troops of wild primates, from playful chimpanzees to Mangabey and Colobus monkeys. We will follow colorful orchid trails frequented by butterflies and identify birds by their melody. For those feeling especially active we can climb the local peaks to reveal the epic panoramas of Lake Kivu and the mountain ranges across the border. Last but not least, we will brave the 60-metre high canopy-walk, an absolute must for visitors to the region!

Meals Included: Full board (Including Local Beers, Wines, Spirits & Soft Drinks)

Day 9 - 12: December 08 – December 11, 2020

Magashi Camp, Akagera National Park, Rwanda



Leaving Nyungwe House behind we will board our flight that is going to take us back to Kigali. In Kigali we will once again meet our guide and driver and together set off for the Eastern border of Rwanda. Here we will find the picturesque Akagera National Park and our home for the next three nights, Magashi Camp.

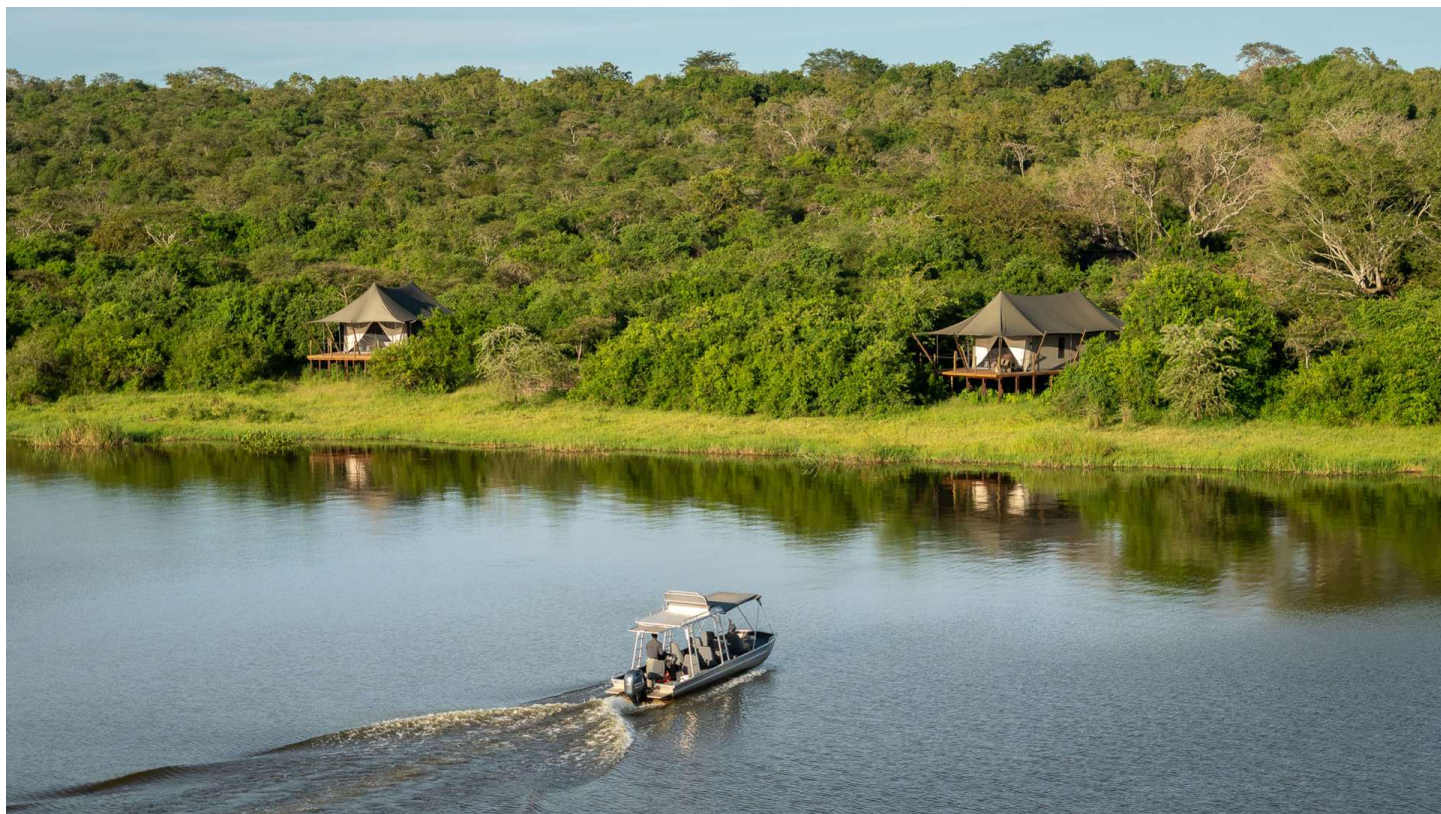
Magashi Camp is situated in the dynamic and phenomenally diverse north-eastern corner of Akagera National Park, overlooking beautiful Lake Rwanyakazinga. Akagera comprises some of the most scenic savannah in East Africa – open plains, woodlands, lakes, swamp, and grassy low mountains – and is home to one of Africa’s highest hippo densities, some very large crocodiles as well as the rare sitatunga and more than 520 bird species.

Over the next few days we will explore this beautiful National Park both by safari vehicle, on foot and by boat. The Akagera National Park is truly one of Africa’s best kept secrets and offers a safari experience unlike any other.

Meals Included: Full board (Including Local Beers, Wines, Spirits & Soft Drinks)

Day 12: December 11, 2020

Depart Africa



This morning we will enjoy a leisurely breakfast before meeting our driver and guide and embarking on our transfer drive back to Kigali. From here we will meet our onward flight home (please note the cost of this international flight is not included in your program cost).

Please note there is an optional post-Rwanda extension itinerary to the beautiful island of Mauritius. Please let us know if you may be interested in joining this extension and we will be more than happy to provide further details.

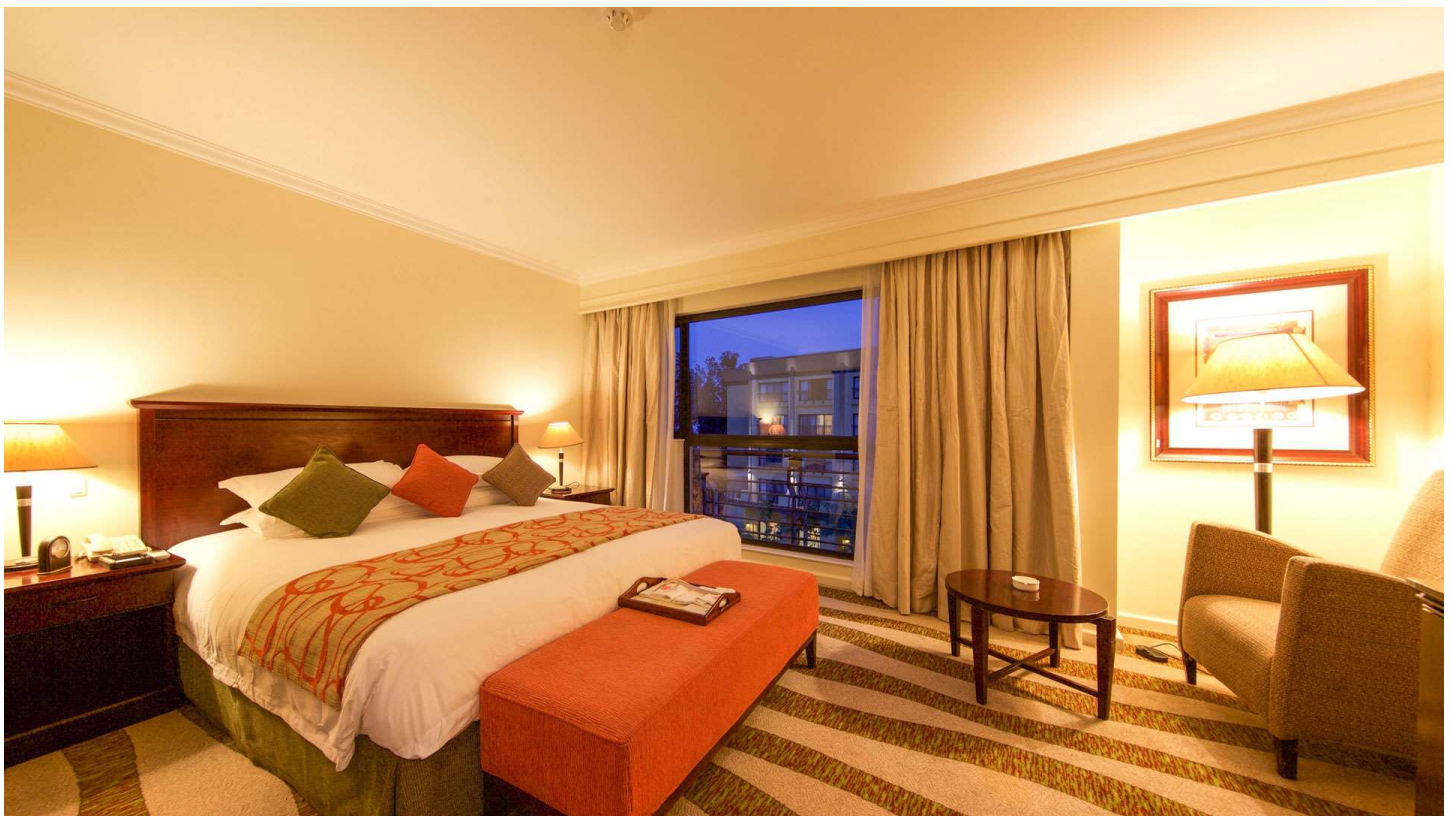
Meals Included: Breakfast

Accommodation

Kigali Serena Hotel, Kigali, Rwanda (2 Nights)

- 1 X Superior Room on a Bed & Breakfast Basis

On a delightful boulevard in the heart of Kigali, Rwanda, in a secure location just a five-minute walk from downtown lies Kigali Serena Hotel. A distinctively rich blend of Rwandan heritage, art and culture with contemporary 5-star comfort in 148 sophisticated rooms and suites, Serena Kigali hotel provides a private and peaceful retreat. Relaxed and stylish, the colorful Sokoni Restaurant is surrounded by extensive tropical gardens and overlooks the pool. With its reputation for colorful cocktails, international cuisine and vibrant live music there are few places better to rest up and relax either on your way in or out of Rwanda.



One&Only Gorilla's Nest, Volcanoes National Park, Rwanda (3 Nights)

- 1 X Forest Lodge King on a Full Board Basis (local drinks included)

Eye to eye with swaying eucalyptus trees, One&Only Gorilla's Nest is the closest resort to Volcanoes National Park – a historic rainforest home to a diverse tapestry of wildlife, including over 340 mountain gorillas, golden monkeys, and 300 bird species. In and around the resort, there is an incredible topography of peaceful sleeping volcanoes that defy gravity, creating an awe-inspiring atmosphere. Cushioned in the foothills of these breathtaking peaks One&Only Gorilla's Nest makes the magical possible as you enjoy a once-in-a-lifetime, personal encounter with the rare and majestic mountain gorillas roaming free in their own natural habitat. Enjoy a seamless connection with the natural world from your own private Forest lodge. Follow the scents and sounds of nature onto your secluded open-air viewing deck or al fresco shower, where the dramatic sights and sounds of your surroundings are sure to set your imagination wild.



One&Only Nyungwe House, Nyungwe Forest National Park, Rwanda (3 Nights)

- 1 X Tented Suite on a Full Board Basis (local drinks included)

Captivating wildlife, dramatic mountain landscapes blanketed with greenery, and its own working tea plantation; see natural wonders flourish at One&Only Nyungwe House. Trek among towering trees, mountain bike through wild forests, and meet One&Only Nyungwe House's enigmatic neighbours, the troops of rare chimpanzees and colobus monkeys. From tea plantations to jungle adventures, One&Only Nyungwe House invites guests to journey through one of Africa's oldest rainforests. Situated in five striking wooden villa clusters, the treetop-skimming, luxury rooms and suites are secluded in wonderfully untamed, National Park surroundings. Your Nyungwe Room celebrates Rwanda's natural beauty, from its immersive tree-grazing balcony to its chic African design and thoughtful furnishings. Generous spaces and beautiful interiors make this bedroom amongst the trees a serene hub for exciting ecological adventures and wildlife encounters.



Wilderness Magashi Camp, Akagera National Park, Rwanda (3 Nights)

- 1 X Tented Suite on a Full Board Basis (local drinks included)

Magashi Camp comprises six spacious and airy tents offering uninterrupted views over Lake Rwanyakazinga, while Magashi's main area comprises a luxurious lounge, dining and bar area, pool, and expansive viewing deck with a convivial fire pit. The architecture and interiors pay homage to traditional Rwandan culture. Teeming with plains game, Akagera now also boasts a healthy population of lion as well as black rhino, which were reintroduced in 2017. Guests will be able to view a range of wildlife on expertly-guided game drives, walks and boating trips, including buffalo, lion, elephant, giraffe, spotted hyaena, zebra, topi, roan, eland and search for the elusive leopard. The Park also boasts almost 500 species of birds.



Included Flight



Day 9 Tuesday, December 08, 2020 Nyungwe House to Kigali

Please note all Exeter Safari Company clients receive a complimentary specially designed travel duffel bag that will be shipped to you prior to departure. You are welcome to make use of this duffel bag or instead travel with your own luggage.

Included In Your Journey

- Accommodation as specified in the itinerary
- Meals, drinks and laundry as specified
- Scheduled flight as specified in the itinerary
- Private/Scheduled transfers as specified in the itinerary
- Scheduled sightseeing and excursions as specified in the itinerary
- Scheduled game viewing activities as specified in the itinerary
- National parks, concession and landing fees where applicable
- Domestic departure tax, fuel and safety levies from airports and airstrips
- One Gorilla Trekking Permit
- Two Covid-19 Tests

Not Included in Your Journey

- Meals, drinks and laundry not specified in the itinerary
- Premium brand drinks, champagne, cognacs, cellar wines and cigars.
- Gratuities and any items of a personal nature
- Sightseeing and excursions not specified in the itinerary
- Flights and transfers not specified in the itinerary
- Travel Insurance

Cost of the Program

- **\$15,265 per person** including all arrangements mentioned in the itinerary above, based on two guests traveling together sharing one room throughout.
- **\$19,675 per person** including all arrangements mentioned in the itinerary above, based on one guest traveling occupying one room throughout.

Booking Conditions

Payments

A non-refundable deposit of 30% of the total program cost is required to secure the arrangements. The balance of payment is then due 60 days prior to departure. The tour price includes planning, handling and operational charges. Rates are quoted in US Dollars.

Insurance

Travel insurance is always recommended to protect your investment.

Cancellations

Written cancellations received more than 60 days prior to departure will incur a 30% forfeit of the total trip cost. Written cancellations received less than 60 days prior to departure are subject to a 100% forfeit of the tour cost.

Safari Vehicle Etiquette

Please note that while on safari, unless specifically stated, your safari vehicle may host other travellers from your lodge.

Rerouted, Cancelled or Delayed Flights that Affect your Itinerary

Should any commercial or regional flights, private charters or air shuttles be cancelled, delayed or rerouted for any reason and this affects your itinerary, the Exeter Safari Company cannot be held responsible for the loss of connecting services or for new services that need to be booked because of this rerouting, cancellation or delay. This is valid for both flights that have or have not been issued by the Exeter Safari Company.

These include, but are not limited to:

- Accommodation: Lost or any additional accommodation required.
- Transport: Unused or new transfers.
- Flights: Unused connecting flights or new flights.
- Guides: Not utilized or new services to hire guides.



111 South Dakota Avenue | Tampa, Florida 33606

Phone: 813 565 8060 | 800 975 2355 | Fax: 813 251 6685

Info@exetersafaris.com